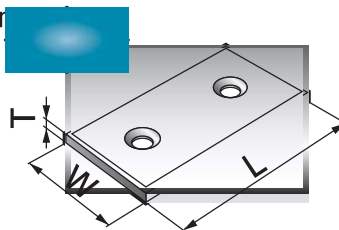




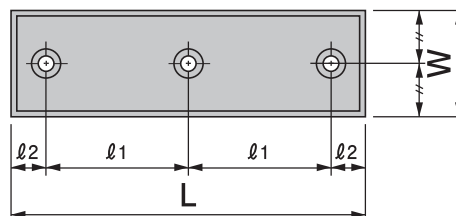
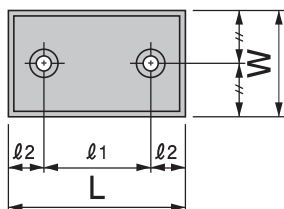
Specify Part No. by required width and length.
(e.g.) Width is 38mm and length is 150mm.

CWT - 38150
Parts No.

Motion direction

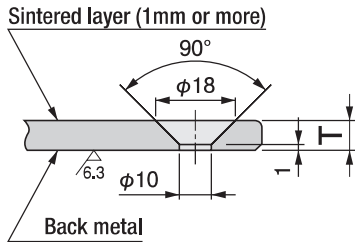


- Dedicated hexagon socket flat head bolts are attached.

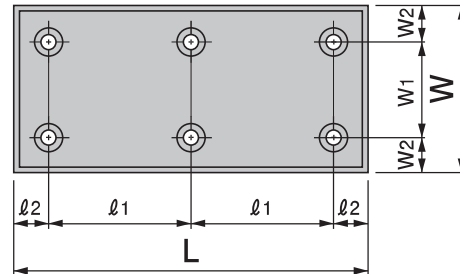
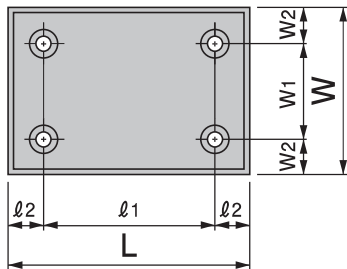
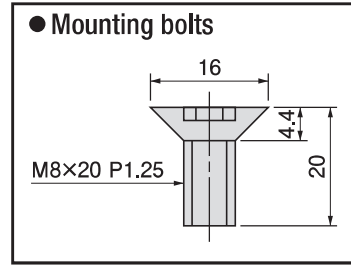
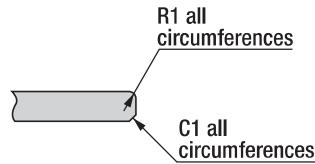


Parts No.	Width		Length		Thickness		Mounting hole intervals			No. of holes
	W	Tolerance	L	Tolerance	T	Tolerance	l ₁	Tolerance	l ₂	
CWT-2250	22	$^{-0.1}_{-0.3}$	50	$^{-0.1}_{-0.3}$	5	± 0.015	20	± 0.2	15	2
CWT-2275	22	$^{-0.1}_{-0.3}$	75	$^{-0.1}_{-0.3}$	5	± 0.015	45	± 0.2	15	2
CWT-22100	22	$^{-0.1}_{-0.3}$	100	$^{-0.1}_{-0.3}$	5	± 0.015	70	± 0.2	15	2
CWT-22150	22	$^{-0.1}_{-0.3}$	150	$^{-0.1}_{-0.3}$	5	± 0.015	60	± 0.2	15	3
CWT-2850	28	$^{-0.1}_{-0.3}$	50	$^{-0.1}_{-0.3}$	5	± 0.015	20	± 0.2	15	2
CWT-2875	28	$^{-0.1}_{-0.3}$	75	$^{-0.1}_{-0.3}$	5	± 0.015	45	± 0.2	15	2
CWT-28100	28	$^{-0.1}_{-0.3}$	100	$^{-0.1}_{-0.3}$	5	± 0.015	70	± 0.2	15	2
CWT-28150	28	$^{-0.1}_{-0.3}$	150	$^{-0.1}_{-0.3}$	5	± 0.015	60	± 0.2	15	3
CWT-3850	38	$^{-0.1}_{-0.3}$	50	$^{-0.1}_{-0.3}$	5	± 0.015	20	± 0.2	15	2
CWT-3875	38	$^{-0.1}_{-0.3}$	75	$^{-0.1}_{-0.3}$	5	± 0.015	45	± 0.2	15	2
CWT-38100	38	$^{-0.1}_{-0.3}$	100	$^{-0.1}_{-0.3}$	5	± 0.015	70	± 0.2	15	2
CWT-38150	38	$^{-0.1}_{-0.3}$	150	$^{-0.1}_{-0.3}$	5	± 0.015	60	± 0.2	15	3
CWT-4850	48	$^{-0.1}_{-0.3}$	50	$^{-0.1}_{-0.3}$	5	± 0.015	20	± 0.2	15	2
CWT-4875	48	$^{-0.1}_{-0.3}$	75	$^{-0.1}_{-0.3}$	5	± 0.015	45	± 0.2	15	2
CWT-48100	48	$^{-0.1}_{-0.3}$	100	$^{-0.1}_{-0.3}$	5	± 0.015	70	± 0.2	15	2
CWT-48150	48	$^{-0.1}_{-0.3}$	150	$^{-0.1}_{-0.3}$	5	± 0.015	60	± 0.2	15	3

Cross-section



Chamfering



Parts No.	Width		Length		Thickness		Mounting hole intervals						No. of holes
	W	Tolerance	L	Tolerance	T	Tolerance	W ₁	Tolerance	W ₂	l ₁	Tolerance	l ₂	
CWT-7575	75	-0.1 -0.3	75	-0.1 -0.3	5	± 0.015	45	± 0.2	15	45	± 0.2	15	4
CWT-75100	75	-0.1 -0.3	100	-0.1 -0.3	5	± 0.015	45	± 0.2	15	70	± 0.2	15	4
CWT-75125	75	-0.1 -0.3	125	-0.1 -0.3	5	± 0.015	45	± 0.2	15	95	± 0.2	15	4
CWT-75150	75	-0.1 -0.3	150	-0.1 -0.3	5	± 0.015	45	± 0.2	15	60	± 0.2	15	6
CWT-100100	100	-0.1 -0.3	100	-0.1 -0.3	5	± 0.015	70	± 0.2	15	70	± 0.2	15	4
CWT-100125	100	-0.1 -0.3	125	-0.1 -0.3	5	± 0.015	70	± 0.2	15	95	± 0.2	15	4
CWT-100150	100	-0.1 -0.3	150	-0.1 -0.3	5	± 0.015	70	± 0.2	15	60	± 0.2	15	6

