

The Kett logo consists of the word "Kett" in a white, bold, sans-serif font, centered within a dark gray square background.

**Data Logger Soft**

**LDL-03**

---

# **Operating Manual**

---

Thank you for purchasing this product.  
Please read the operating manual carefully and use this product properly.



# CONTENTS

|  |    |
|--|----|
| Introduction .....   | 4  |
| Packages .....   | 4  |
| System Requirements.....   | 5  |
| Notes.....   | 5  |
| 1. Install.....  | 6  |
| ■ LDL-03 Instal .....  | 6  |
| ■ USB-RS232C converter (Option) Install .....                    | 9  |
| ■ Connect Coating Thickness Tester L-373 to PC.....              | 11 |
| 2. Operate LDL-03 .....  | 12 |
| ■ Start LDL-03 .....   | 12 |
| ■ Set RS-232C port number .....                                  | 14 |
| ■ Data transmission and storage.....                             | 15 |
| ■ End .....  | 15 |
| 3. Uninstall (Remove).....                                       | 16 |
| ■ Uninstall LDL-03 .....   | 16 |
| ■ Uninstall USB-RS232C Converter cable driver .....              | 18 |
| 4. Reference.....  | 19 |
| ■ How to search serial port (RS-232C) number; (COM number) ..... | 19 |
| ■ Version information of LDL-03 .....                            | 20 |
| ■ Troubleshooting .....  | 21 |

# Introduction

---

The “Data Logger Soft LDL-03 for L-373series” (=LDL-03) is data logger for KETT Coating Thickness Tester L-373 (=L-373).

The LDL-03 pastes a measurement data by L-373 on ©Microsoft Excel by the automatic operation, with the personal computer (=PC) that operates ©Microsoft Windows XP / Vista / 7.

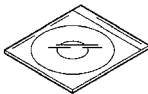
- \* Please see each operating manual, about the PC operation, the operating system operation (=“OS”, Microsoft Windows XP / Vista / 7), and or the other software operation (©Microsoft Excel).
- \* In this operating manual, there are the operations and the illustrations of Windows XP. Please operate the OS according to an individual manual excluding the special note, on Windows Vista and 7.

# Packages

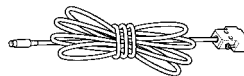
---

Check your LDL-03 Software Package for the following items.

1×CD-ROM



1×VZC53 Cable



1×Operating manual  
(This book)



\* USB-RS232C converter (Option)

This program has been checked the operation only with serial port (=RS-232C port) of the PC connecting directly or with the option USB-RS232C converter. If your PC does not have a connectable RS-232C port directly, please use this option converter. When other converters are used, we do not guarantee the operation.

# System Requirements

---

- OS : Windows XP (32bit) / Vista (32bit) / 7 (32bit / 64bit)
- PC : Manufacturer supported PC running the above OS (Microsoft recommended environment), with at least 1 spare RS-232C port or USB port (Ver.1.1 or later) and CD-ROM drives.
- Essential Software : Excel 2003 / 2007 / 2010 (32bit / 64bit)  
Microsoft Corporation recommended operating system requirements.
- \* If the volume of measurement result data to be handled is large, we recommend increasing your PC memory.
- \* The combination of the OS and the essential software will depend on the OS supporting that software.

## Notes

---

1. KETT ELECTRIC LABORATORY has the copyright of "LDL-03" and that hangs to this product and other rights.
  2. It is impossible to reproduce by using part or all of this software and the manual without permission.
  3. This software can be installed in one personal computer by single-unit (= one license). When using it with two or more personal computers, please buy the license for the number of the personal computer that installs it.
  4. The screen and the file composition used in this book might be actually different.
  5. The specification of this software and the content described in the manual might change without a previous notice in the future.
  6. In any case, KETT ELECTRIC LABORATORY does not take responsibility to your damage which is caused by the introduction and the mistake setting of this software except defective software, and to the influence which is caused by using this software and manual.
  7. When the customer uses this software that it is not appropriately, or when the customer uses this software without following the instruction of this manual, our company doesn't assume the responsibility of the trouble and any losses.
- \* The names and logos of Microsoft, Windows, and Excel are either registered trademarks or trademarks of Microsoft Corporation in United States and other countries. Other companies and product names are their respective registered trademarks.

# 1. Install

## Notes

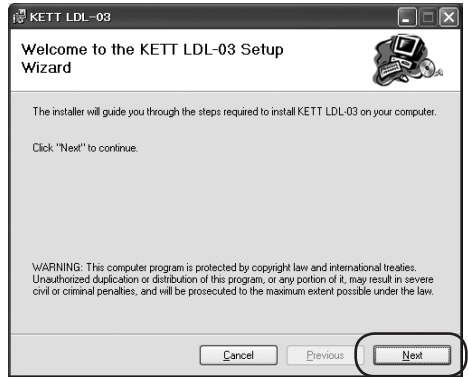
- \* If you use the optional USB-RS232C converter, please do not connect the USB-RS232C converter with PC until the driver's installation is completed.
- \* Please operate the installation software with log on manager's group account.  
(Recommend; account of administrator's group)
- \* If the dialog "User account control (Vista/7)" or "Install program as other user (XP)" is displayed while install operation, the installation cannot be completed even if the information is input. First of all, log off from PC, and try to reinstall after log on by the manager's account.

## LDL-03 Install

1. Startup Windows.
2. Insert the LDL-03 CD-ROM.
  - \* It is necessary to end all other applications.
3. Double click [CD drive] in "My Computer", and double click "setup.exe".

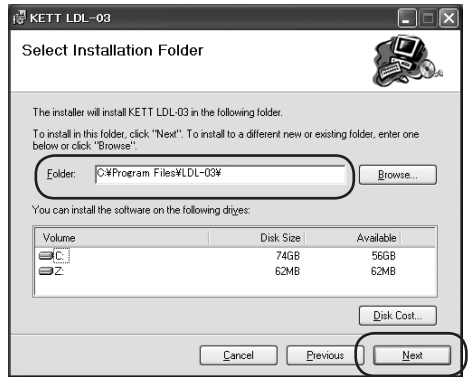


4. Click [Next].

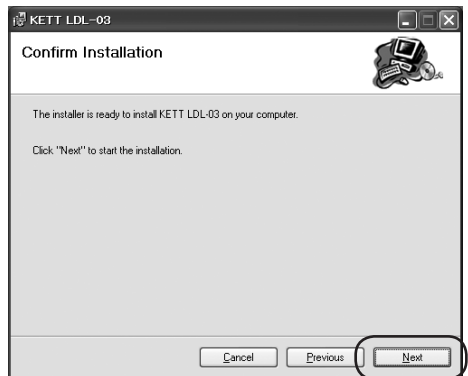


5. Click [Next].

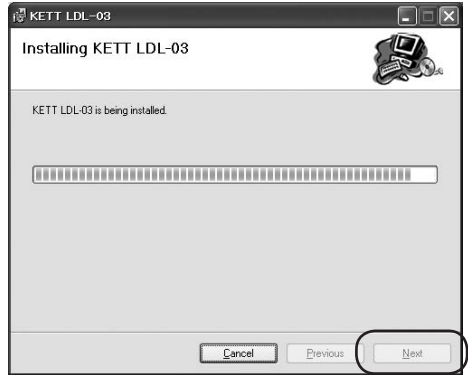
When you install to different folder, you can change to different folder. The "Confirm Installation" dialog will be displayed.




6. Click [Next].

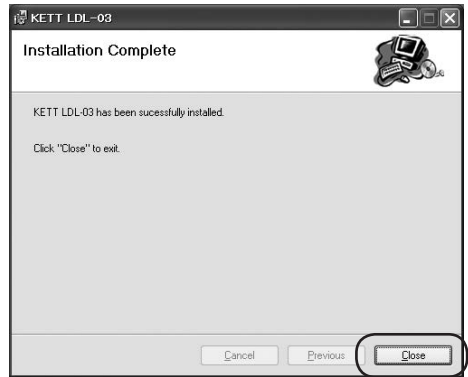


7. Click [Next].



8. Click [Close].

The installation ended. Please confirm the short cut (  ) of LDL-03 on desktop.



Setup is now complete.

When you need to install the USB-RS232C converter driver, go on to P.9[■USB-RS232C converter (Option) Install].



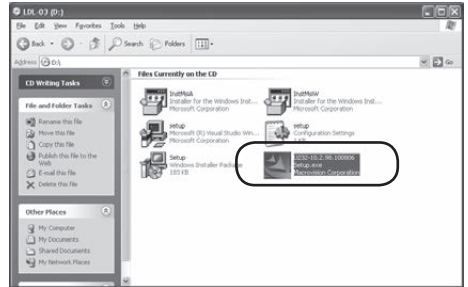
## ■ USB-RS232C converter (Option) Install

Install the “USB-RS232C converter driver” using the following method.

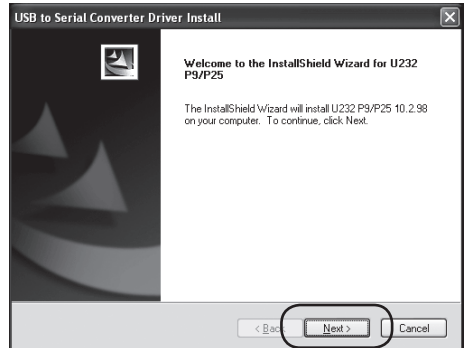
Notes

\* When the computer has RS-232C port of connecting directly, it is not necessary to install it.

1. Double click [CD drive] in “My Computer”, and double click “U232-10.2.98.100806.exe”.



2. Click [Next].

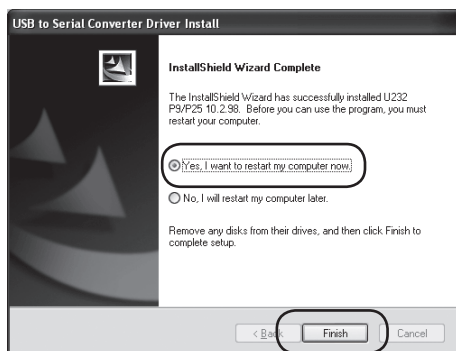


3. Click [Next].



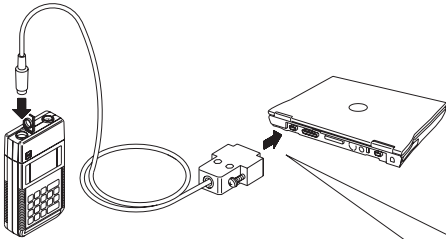
4. Click [Finish].

\* Please restart your PC before using.



## ■ Connect Coating Thickness Tester L-373 to PC

Please connect PC with Coating thickness Tester L-373 by using the VZC53 cable as shown in figure below.



When the PC does not have any RS-232C port, the optional USB-RS232C converter is necessary for our specifications to VZC53 and the PC.

### ■ Connect USB-RS232C converter : first time

- \* When you connect the option USB-RS232C converter at first time, please operate the installation software with log on manager's group account. (Recommend; account of administrator's group)
- \* If you connect the option USB-RS232C converter to your PC before installing the driver, a dialog will be displayed requesting you to install the driver. Please, disconnect the USB-RS232C converter and install the driver first. (See P.9 [■ USB-RS232C converter (Option) Install])
- \* The following dialogs are displayed when the converter is connected, first time. And the installation work makes progress by the automatic operation.



The RS-232C port number is display according to OS that operates by your PC, please remember the displayed the serial port number.

- \* Refer to look up at the RS-232C port number to P.19.

## 2. Operate LDL-03


Please confirm the L-373 setting to output the measurement data, beforehand.

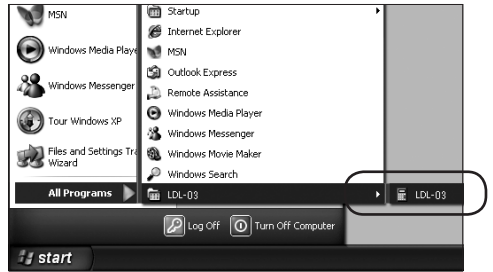
Please, see L-373 operating manual.


### ■ Start LDL-03

1. Turn on your PC and startup Windows.

2. Double Click (  ) LDL-03 on desktop, or click LDL-03 on program group.

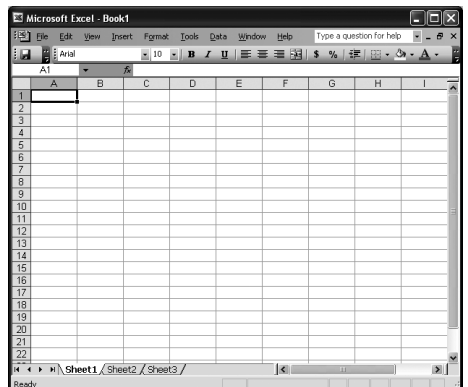
\* If “KETT LDL-03” does not display, search for the program from My Computer, or click on  → [All Programs]→[Accessories] → [Explorer], and search for the program.



3. The LDL-03 icon (  ) is displayed on the task tray when the LDL-03 is started, and a new EXCEL worksheet starts.

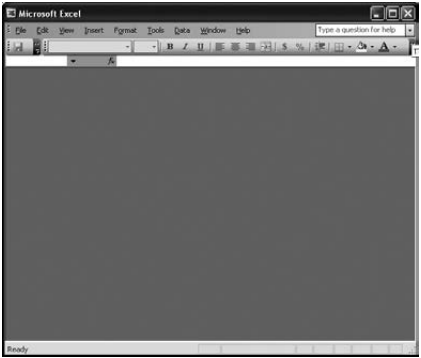
\* If the cable is already connected, the connection will be started automatically when the application is started up.

\* RS-232C port (Com) will open automatically.

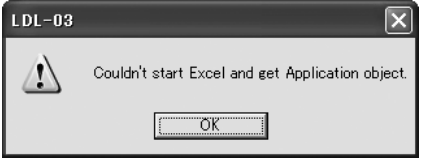


**Trouble**


\* When the LDL-03 starts on PC without RS-232C port, Excel will start without new work-sheet.



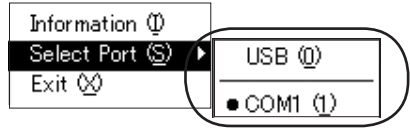
\* If the LDL-03 started up on your PC with excel not installed, the following dialogs are displayed. Please, restart the LDL-03 after installing excel.



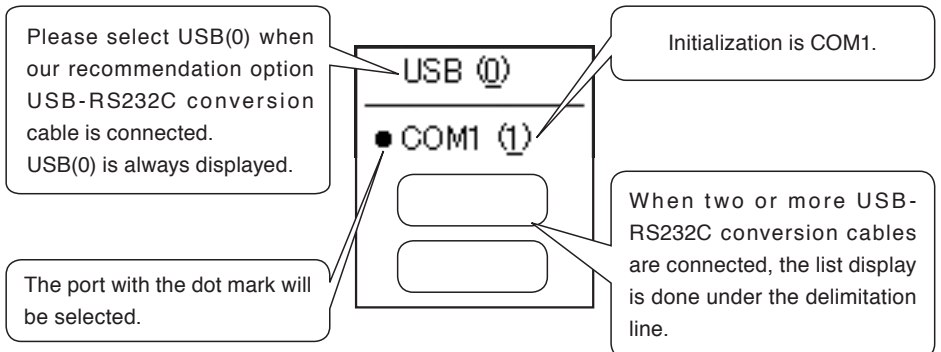
## ■ Set RS-232C port number

Click the LDL-03 icon (  ) in the task tray. Please, Select RS-232C port with L-373 connecting.

A new EXCEL work-sheet opens when the port that can be used is selected.



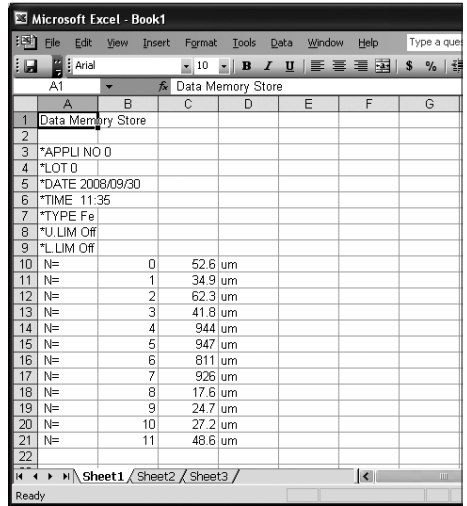
- \* In a right example, the port that can be selected is “USB (0)” and “COM (1)” .
- \* Please operate this process when it starts first time or you change the communications cable connection.
- \* Please see P.19 when you do not know the number.
- \* The new EXCEL work-sheet opens whenever the port is changed.



## Data transmission and storage


When “Data Output” of L-373 is set, measurements and the calculation data are put on the EXCEL worksheet.

- \* Please see the L-373 operating manual for details of Data Output Setting.
- \* If you need the setting data, for example [APPLI NO] or [LOT], please start LDL-03, before measuring.
- \* The EXCEL file is not saved by the automatic operation. Please save it yourself.
- \* LDL-03 cannot add data to an existing EXCEL file. A new EXCEL work-sheet is made by the automatic operation when receiving the data even if EXCEL is ended by mistake.



|    | A                 | B          | C    | D  | E | F | G |
|----|-------------------|------------|------|----|---|---|---|
| 1  | Data Memory Store |            |      |    |   |   |   |
| 2  |                   |            |      |    |   |   |   |
| 3  | *APPLI NO         | D          |      |    |   |   |   |
| 4  | *LOT              | 0          |      |    |   |   |   |
| 5  | *DATE             | 2008/09/30 |      |    |   |   |   |
| 6  | *TIME             | 11:35      |      |    |   |   |   |
| 7  | *TYPE             | Fe         |      |    |   |   |   |
| 8  | *U.LIM            | Off        |      |    |   |   |   |
| 9  | *L.LIM            | Off        |      |    |   |   |   |
| 10 | N=                | 0          | 52.6 | um |   |   |   |
| 11 | N=                | 1          | 34.9 | um |   |   |   |
| 12 | N=                | 2          | 62.3 | um |   |   |   |
| 13 | N=                | 3          | 41.8 | um |   |   |   |
| 14 | N=                | 4          | 944  | um |   |   |   |
| 15 | N=                | 5          | 947  | um |   |   |   |
| 16 | N=                | 6          | 811  | um |   |   |   |
| 17 | N=                | 7          | 926  | um |   |   |   |
| 18 | N=                | 8          | 17.6 | um |   |   |   |
| 19 | N=                | 9          | 24.7 | um |   |   |   |
| 20 | N=                | 10         | 27.2 | um |   |   |   |
| 21 | N=                | 11         | 48.6 | um |   |   |   |
| 22 |                   |            |      |    |   |   |   |

## End

Click the LDL-03 icon (  ) in the task tray, and select [Exit].



### 3. Uninstall (Remove)

#### Notes

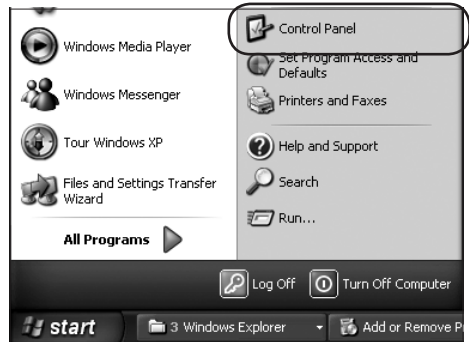
- \* Please operate the uninstallation software with log on manager's group account. (Recommend; account of administrator's group)
- \* If "uninstall" cannot be selected, or the dialog "User account control (Vista/7)" or "Install program as other user (XP)" is displayed while uninstall operation, the uninstallation cannot be completed. First of all, log off from PC, and try to log on by the manager's account.

### ■ Uninstall LDL-03

#### Notes

- \* We will recommend the backup of the measurement data etc. to be reserved before this operation.

1. Select [Control Panel] in start menu.



2. Double click [Add or Remove Programs]

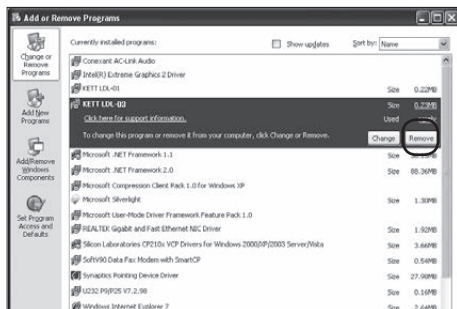
- \* If you operate Windows Vista/7, please select [Programs and Features].



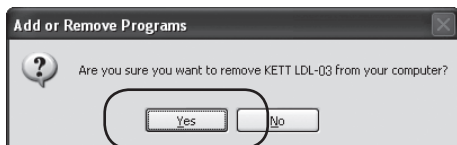


3. Select [KETT LDL-03], and click [Remove]. or [Change/Remove].

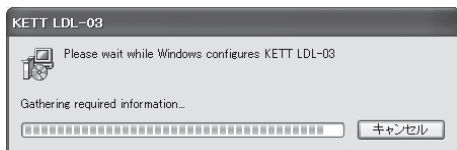
\* If you operate Windows Vista/7, please select [KETT LDL-03], and click [Uninstall/Change]. If “User account control” is displayed, select [continue].



4. Click [Yes].



Uninstalling will start.

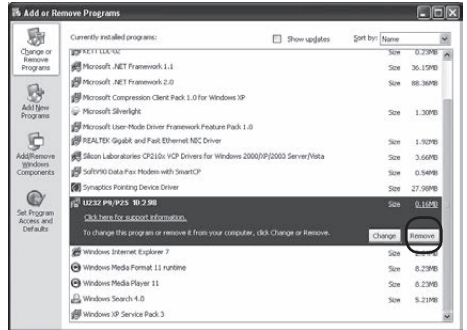


## ■ Uninstall USB-RS232C Converter cable driver

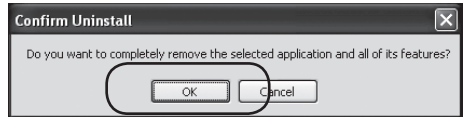
1. Please operate same operation from P.16(1) to (2).

2. Select [U232 P9/P25 10.2.98] and Click [Remove].

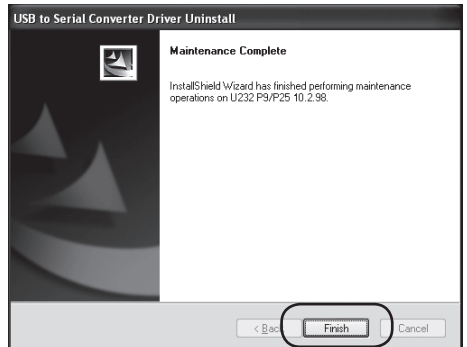
\* If you operate Windows Vista/7, please select [U232 P9/P25 10.2.98], and click [Uninstall]. If “User account control” is displayed, select [continue].



3. Click [OK].  
Uninstalling will started.



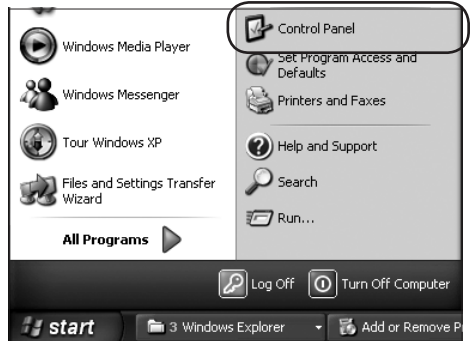
4. Click [Finish].



## 4. Reference

### ■ How to search serial port (RS-232C) number; (COM number)

1. Select [Control Panel] in start menu.

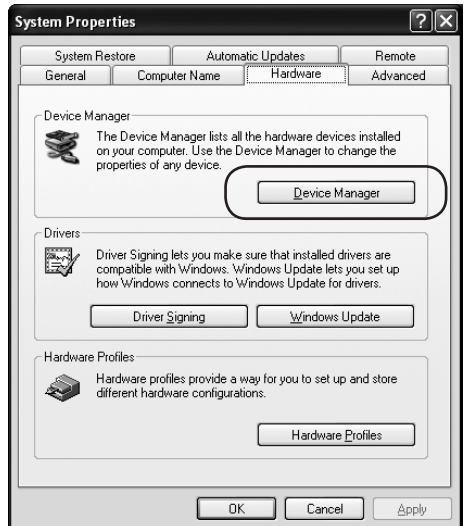


2. Double click [System].

\* Please make the control panel not the category view but a classic view on Windows XP and Windows Vista.

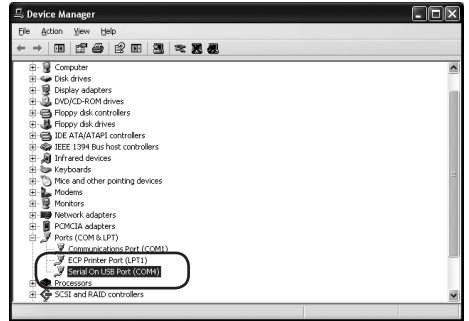


3. Click [Device Manager].




4. In a right example, the direct connect RS-232C port is one, because it is displayed [Communication Port (COM1)].

And, the RS-232C port of USB-RS-232C converter is four, because it is displayed [Serial On USB Port (COM4)].




## ■ Version information of LDL-03

Click the LDL-03 icon (  ) in the task tray, and select [Information].



## ■ Troubleshooting

| Trouble  | Check Point   |
|--|---|
| <p>Data is not putted on EXCEL.</p>  | <ol style="list-style-type: none"> <li>1. Please confirm whether the selected RS-232C port is corresponding to the connected port. (See P.19)</li> <li>2. Please confirm whether PC is connected with L-373 by the connecting cable.</li> </ol> |
|  <p>It is displayed while installing it, "It doesn't pass Windows logo testing".</p> | <p>USB-RS232C converter (option) has been confirmed the operation. Please advance the installation clicking the continuation button at ease.</p>  |

The logo consists of a dark gray square on the left containing the word "Kett" in white, bold, sans-serif font. To the right of the square, the company name "KETT ELECTRIC LABORATORY" is written in a larger, bold, italicized, black sans-serif font.

**Kett**

***KETT ELECTRIC LABORATORY***

1-8-1 Minami-Magome Ota-Ku, Tokyo 143-8507 Japan  
Tel.+81-3-3776-1121 Fax.+81-3-3772-3001  
URL <http://www.kett.co.jp/> E-mail [overseas@kett.co.jp](mailto:overseas@kett.co.jp)