

KH25

Pressure Transmitter

Fluids and gases measurement
(Featuring stainless diaphragm)

Overview

This pressure transmitter measures very low fluids and gases pressure and converts pressure to electric signal for its transmission.

Featured semiconductor strain gauge contributes for excellent durability and stability.

Features

- Excellent corrosion resistance can be achieved through the use of metallic diaphragm



Specifications

Media:

Gases and Fluids

Installation Environment:

Install in location where no gases or liquids may exist that have the potential to become flammable or ignitable under normal operating condition

Type:

Connector type (With 2m shield cable)

Terminal box type

*The diaphragm type is also available. Please contact us.

Connection:

G1/4B, G3/8B, G1/2B, R1/4, R3/8, R1/2,
1/4NPT, 1/2NPT

Wetted parts:

Diaphragm SUS316

Fitting SUS316

Pressure range:

0 to 5kPa→0 to 0.3MPa

-5 to +5kPa→-0.1 to 0.3MPa

*The absolute pressure type is also available. Please contact us.

Allowable maximum pressure:

150% of pressure range

Operating temperature range:

-10 to 60°C (Non freezing or condensing)

Accuracy:

±0.5%F.S.

Temperature coefficient:

±0.05%F.S./°C (Zero)

±0.05%F.S./°C (Span)

Electrical characteristics:

Power source: 24V DC±10%

Output: 4 to 20mA DC (2 wire)

1 to 5V DC (3 wire)

Load resistance: 500Ω maximum (For current output)

10kΩ minimum (For voltage output)

Transmission: 2 wire or 3 wire

Cable:

0.2mm², With 2m 4 core shielded cable, φ6.2mm (Standard)

Outlet for electric wire:

Gland JIS 15b (Terminal box type)

Case material/finish:

AC7A · Gray crystal paint

Protection rating:

Indoor use

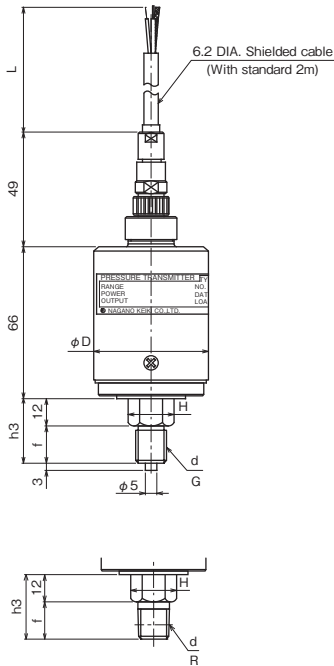
Weight:

Approx. 550g (Connector type)

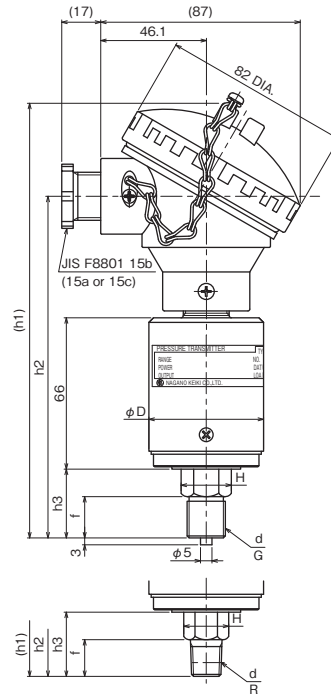
Approx. 750g (Terminal box type)

Dimensions

Connector type



Terminal box type



d	f	h3	H
G1/4B	16	28	17×19.6 Hex.
G3/8B	18	30	19×21.6 Hex.
G1/2B	20	32	24×27.7 Hex.
R1/4	16	28	17×19.6 Hex.
R3/8	18	30	19×21.6 Hex.
R1/2	20	32	24×27.7 Hex.
1/4NPT	16	28	17×19.6 Hex.
1/2NPT	20	32	24×27.7 Hex.

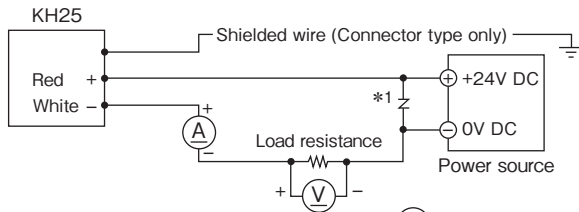
Range	D DIA.
30kPa and below	60
30kPa to 0.3MPa	50

d	f	(h1)	h2	h3	H
G1/4B	16	187	147	28	17×19.6 Hex.
G3/8B	18	189	149	30	19×21.6 Hex.
G1/2B	20	191	151	32	24×27.7 Hex.
R1/4	16	187	147	28	17×19.6 Hex.
R3/8	18	189	149	30	19×21.6 Hex.
R1/2	20	191	151	32	24×27.7 Hex.
1/4NPT	16	187	147	28	17×19.6 Hex.
1/2NPT	20	191	151	32	24×27.7 Hex.

Wiring

Example 1) 2 wire (4 to 20mA DC output)

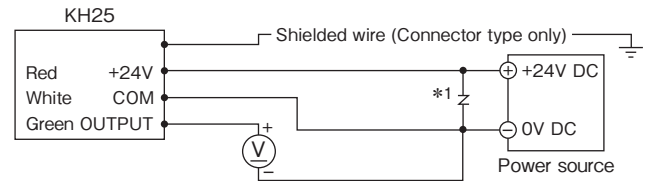
If necessary on the measures, please ground the shield wire.



Example 2) 3 wire

(1 to 5V DC output, power consumption 6mA or lower)

If necessary on the measures, please ground the shield wire.



(A) Receiver (DC Ammeter) (V) Receiver (DC Voltmeter)

* 1 When connecting equipment which can generate surge from the same power source, connect a varistor etc. to protect KH25

Connector type

2 wire

A (Red) +
C (White) -

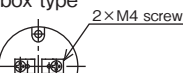


3 wire

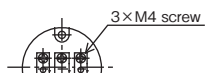
A (Red) POWER
C (White) COMMON
E (Green) OUTPUT

Terminal box type

2 wire



3 wire



POWER + OUTPUT
COMMON

Note: To ensure the stability of the direct output,
the stability of the power source is required.

