

KG20 I/P Converter

Outline

This KG20 I/P Converter is used when operating the pneumatic operating unit such as a diaphragm operated control valve, which converts the 4 to 20mA DC signal current into a signal pressure of 20 to 100kPa in proportion to it.

Features

- Because both of the air pressure connection port and the input connection terminal block are located on the outside, the connection work is easy.
- Zero and span adjustments can be made from the front.



RoHS

Specification

Operating condition:

Where no flammable gases or liquids exist which, under normal conditions, may cause ignition or explosion.

Mounting:

Surface mounting

Connection:

Rc1/4

Gas contact part material:

Aluminum die cast, Stainless steel, PCV, NBR, Nylon

Input signal:

4 to 20mA DC

Operating temperature range:

-5°C to 55°C (No freezing or condensation)

Input resistance:

Approx. 310Ω

Supply air pressure:

140kPa±10%

Air consumption:

Approx. 6NL/min (Maximum)

Output signal:

20 to 100kPa

Accuracy:

±0.3%F.S.

Temperature coefficient:

±0.05%/°C

Protection:

Indoor use

Case finishing:

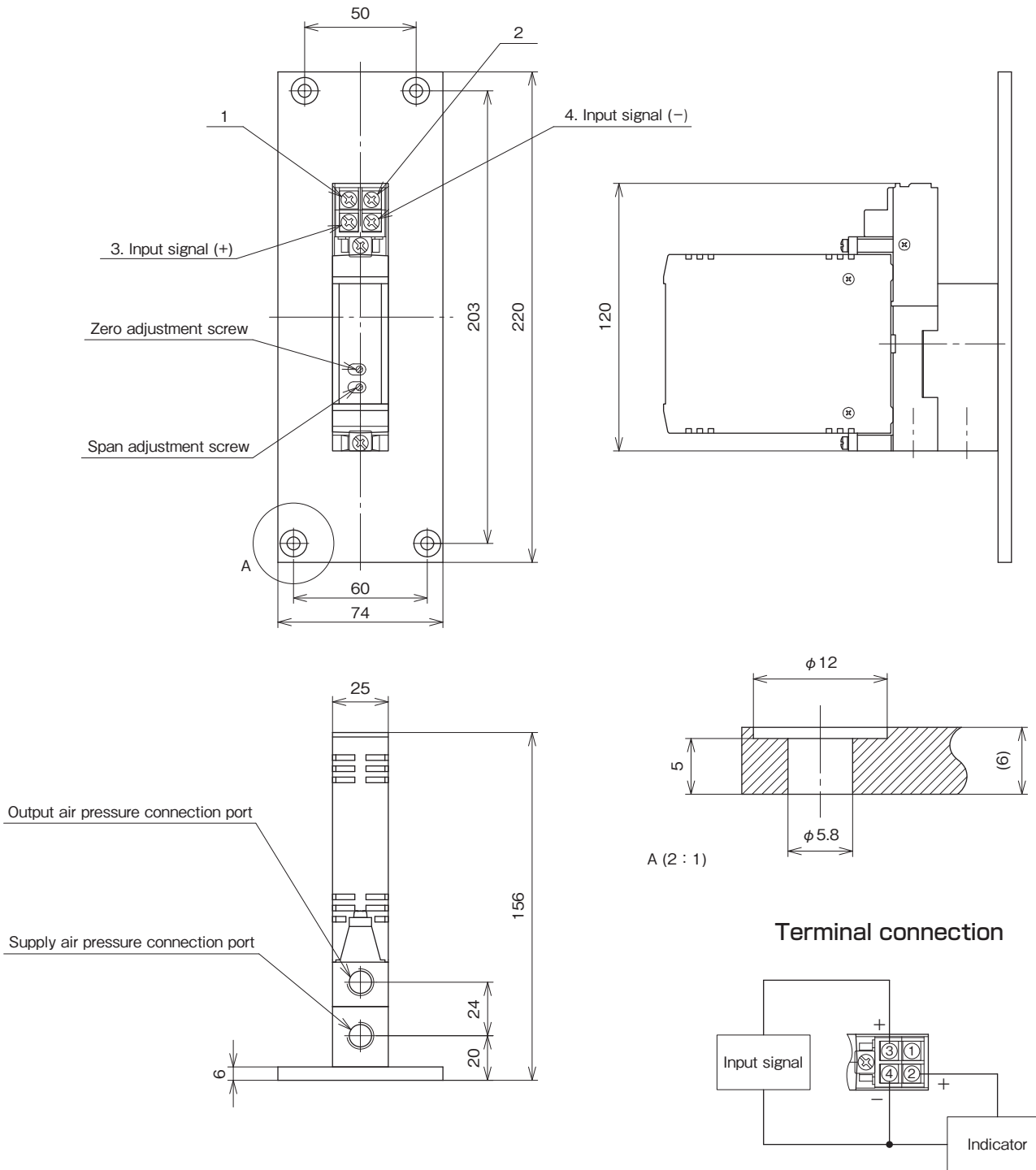
Flame-retardant black resin

Weight:

Approx. 600g

Dimensions

Unit: mm



Installation

1. Secure it with four M5 screws to install.
2. Install in a place where it does not get wet in the rain without vibration.
3. Always flush the air pressure piping.

Model number configuration

Please specify for ordering the model number and each specs.

Model			I/P Converter																
K G 2 0			M	5	3	X	X	X	X	X	X	X	X	X	X	X	X	X	X
I/P Converter			①	②	③	④	⑤	⑥	⑦	⑧	⑨	⑩	⑪	⑫	⑬	⑭	⑮		
Model number			Selective spec.					Additional spec. (Option)											
① Mounting	M	Surface mounting																	
② Connection	5	Rc1/4																	
③ Output signal	A	0.2 to 1kgf/cm ²	(Supply air pressure 1.4kgf/cm ² ±10%)* 1																
	B	3 to 15psi	(Supply air pressure 20psi±10%)* 1																
	C	20 to 100kPa	(Supply air pressure 140kPa±10%)																
	D	0.2 to 1bar	(Supply air pressure 1.4bar±10%)* 1																
④ Accuracy	3	±0.3%F.S.																	
⑮ Document	0	Not required																	
	1	Required (Documents available upon request) Datasheet (Drawing / specifications) instruction manual, inspection procedure, calibration test report (One-part one sheet), attending inspection																	

[Manufacturing range]

* 1 When requiring an output signal other than kPa, this is only available for export.

* Specify code "X" to refer N/A